

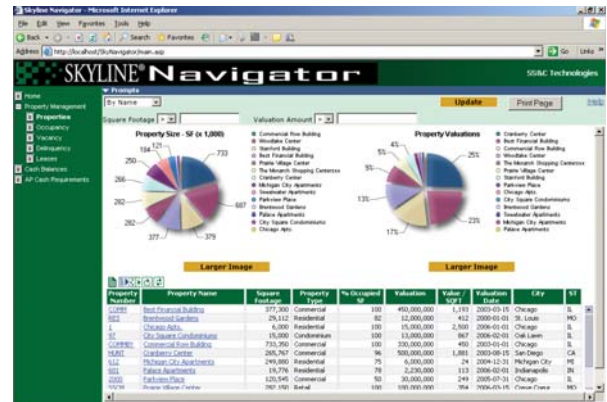
Internet-based reporting system for SKYLINE

Web-based, real-time access to SKYLINE operational and financial data from anywhere and at any time through an Internet browser.

- Analyze performance, revenue and operations by property, property type or portfolio from a single data source.
- Easily locate and drill into "red-flag" properties, units or occupants down to transaction level to quickly determine source of problem.
- Designed for use at all levels in an organization – users do not need to know how to use SKYLINE to access data.

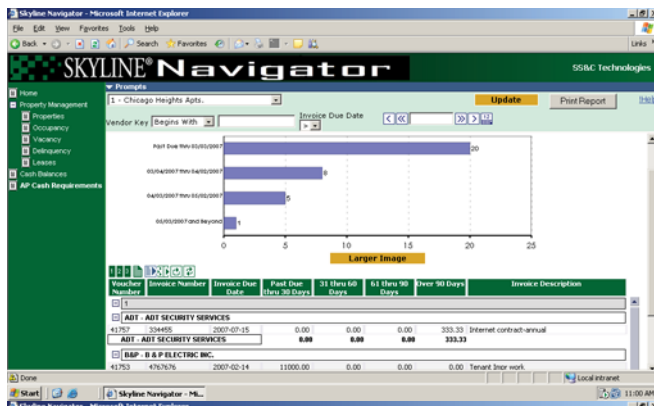
Simple point and click design to organize, view, drill-into, and analyze real-time SKYLINE data by:

- Property
- Occupancy
- Vacancy
 - Drill into "red-flag" properties to determine which units are vacant
 - View market rents and floor plans for leasing agents
- Delinquency
 - Drill down to transaction level to determine source of delinquency
- Lease information
 - Analyze lease information including value of leases
 - Drill into details on lease options, lease expiration date, actual rent vs. market rent
- Scheduled charges
 - Review billing details over term of lease
 - Review rent and payment history
- Occupant history data from the SKYLINE occupant ledger
- Cash balance by property and portfolio
- AP cash requirements
 - Review aging report of outstanding invoices
 - Review what each property owes vendors
- PM, GL and AP reports
 - Can be viewed by managers, owners, investors over a web browser without printing reports
 - Organize, view and print all published financial statements



Additional Features Included in SKYLINE Navigator 2.0

- Document imaging to store any property or unit image then retrieve and view by Internet browser
- Attach reports from sources outside of SKYLINE to the Navigator 2.0
- Easy export of any report into Excel for further analyses
- Print presentation quality reports from every screen
- Ability to read multiple databases from a single source
- Access control security uses full SKYLINE security by property or by function to maintain full control over who sees which reports



For additional information, pricing or a personalized web presentation, please contact:
 Anton Systems, Inc.
 13798 NW 4th Street, Suite 308
 Sunrise, FL 33325
 (800) 683-0239
www.antonsystems.com